

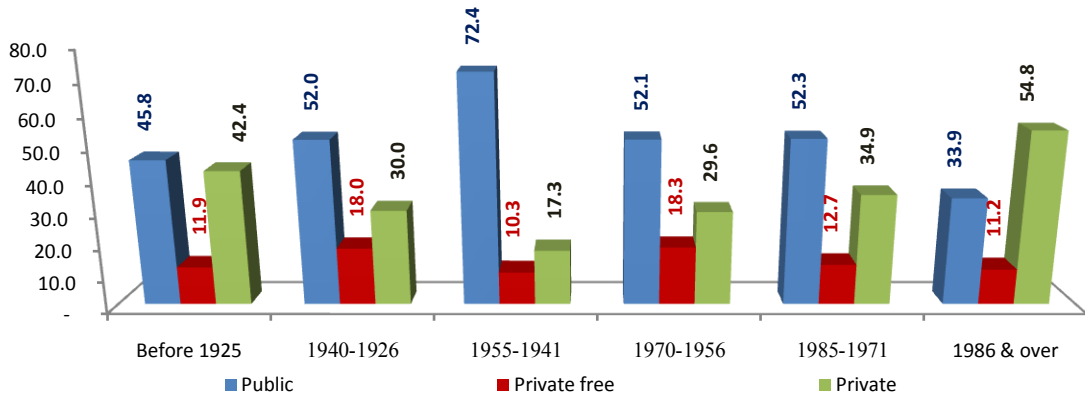
12. EDUCATION

The Centre de Recherche et de Développement Pédagogique provides CAS with education figures. Education deals with academic, vocational, and higher education.

Academic education

There are 2,805 schools in Lebanon during the academic year 2007/2008. 907,211 Students are studying in these schools recruiting 87,808 people. 2.1% of these schools were established before 1925 and 34.3% since 1986. 49.4% are public schools, 13.3% are private free schools and 37.3% are private schools.

Graph 12.1 – Distribution in percentage of academic schools by date of foundation

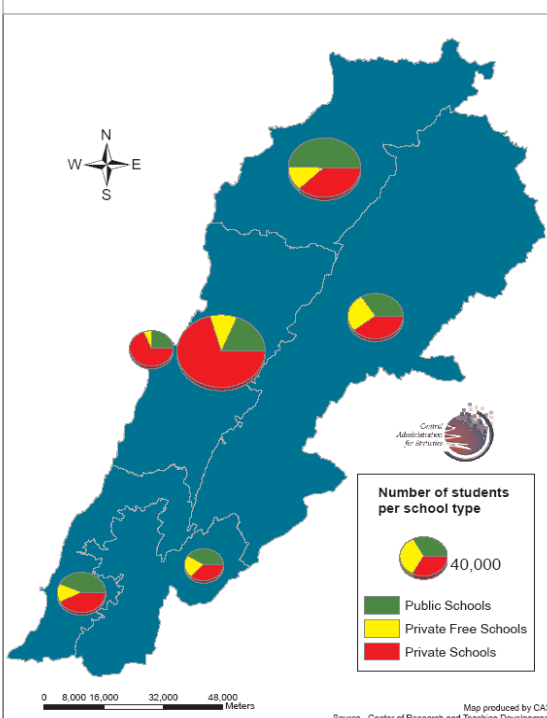


Graph made by CAS based on the Centre de Recherche et de Développement Pédagogique data (2008)

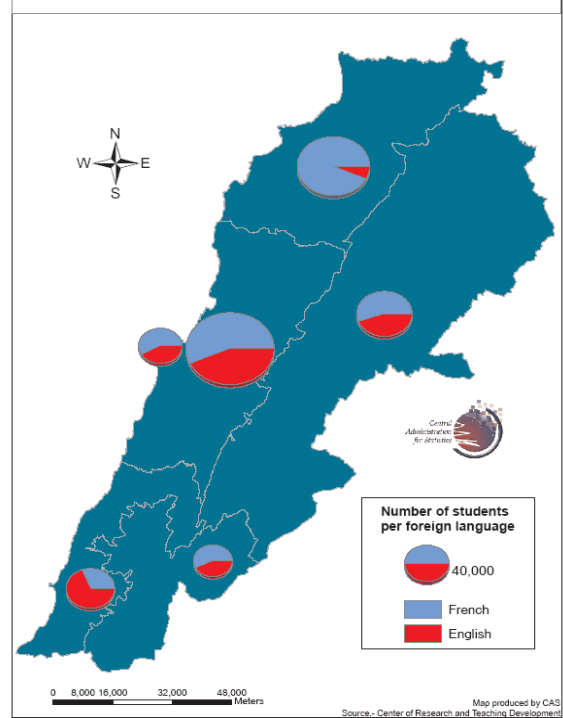
Students

The 907,211 students during the academic year 2007/2008 are studying in public (33.2%), in private free (13.9%) and in private schools (52.8%). Among the 907,211 students, 50.2% are female students. 16.6% of students are in pre-school, 49.1% are in elementary school, 21.1% are in intermediarschool and 13.3% are in secondary school. 62.4% of the students are french educated and 37.6% are english educated.

Distribution of Students per School Type in 2007/2008



Distribution of Students Regarding Foreign Language in 2007/2008



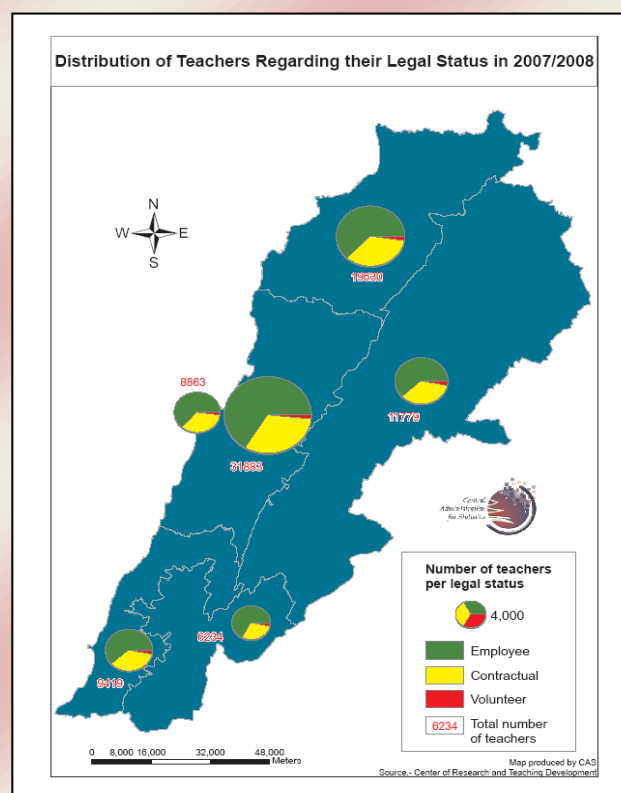
Employees

The 2,805 schools recruit 87,808 people divided among employees (63.8%), contractuels (34.0%) and volunteers (2.2%).

Table 12.1 – Distribution in percentage of teachers regarding their legal status in academic schools by Mohafazat in 2007/2008

Mohafazat	Teachers' number	Teachers' percentage
Beirut	8,863	10.1%
Mount-Lebanon – Beirut suburbs	20,235	23.0%
Mount Lebanon excluding Beirut suburbs	11,648	13.3%
North Lebanon	19,630	22.4%
Bekaa	11,779	13.4%
South Lebanon	9,149	10.7%
Nabatiyeh	6,234	7.1%
Total	87,808	100.0%

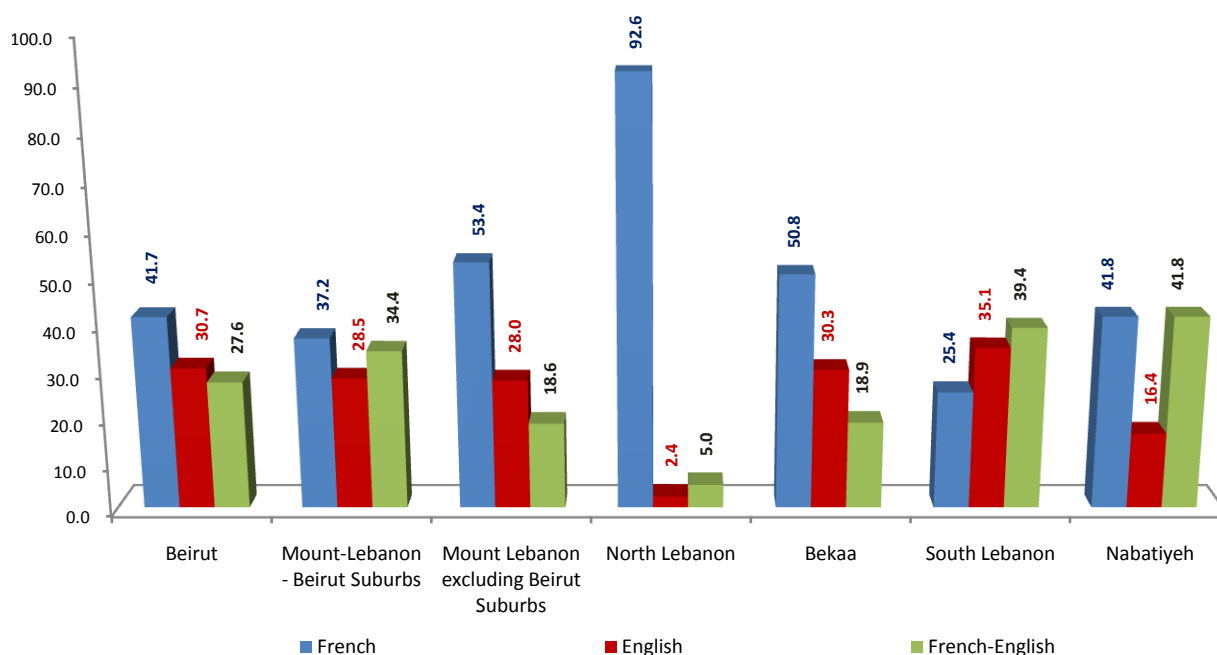
Table made by CAS based on the Centre de Recherche et de Développement Pédagogique data (2008)



Schools

The 2,805 schools are pre-schools (2.7%), elementary (27.3%), intermediary (43.9%) and secondary schools (26.1%). 21.8% schools teach in English, 22.7% in French-English and 55.4% in French.

Graph 12.2 – Geographic distribution in percentage of academic schools by teaching language in 2007/2008

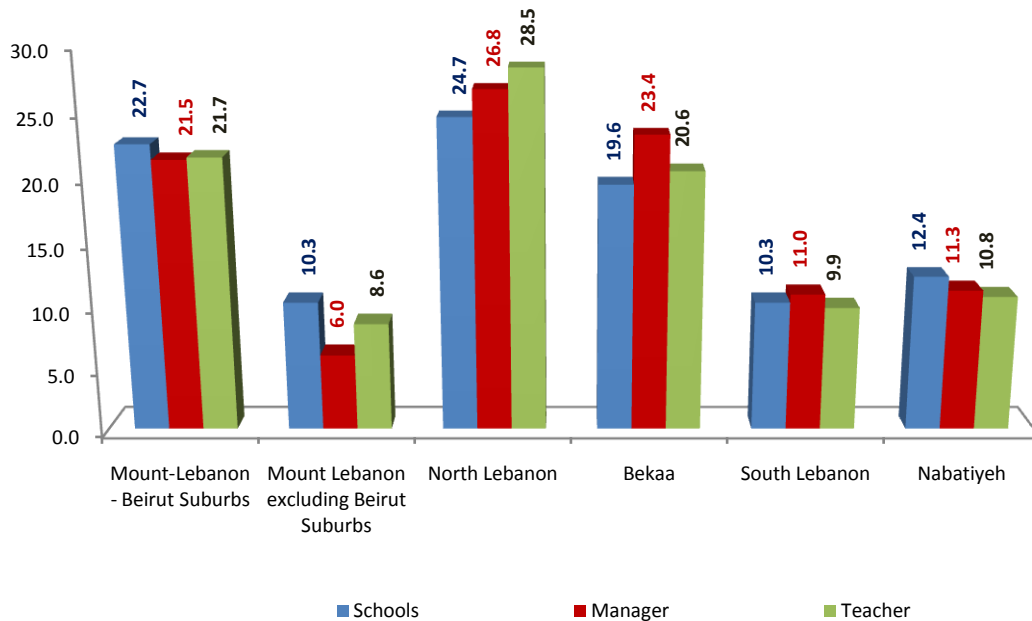


Graph made by CAS based on the Centre de Recherche et de Développement Pédagogique data (2008)

Vocational education

There are 97 official vocation education schools in Lebanon recruiting 10,394 teachers and 435 managers. Among these 10,829 people, 41.6% are females.

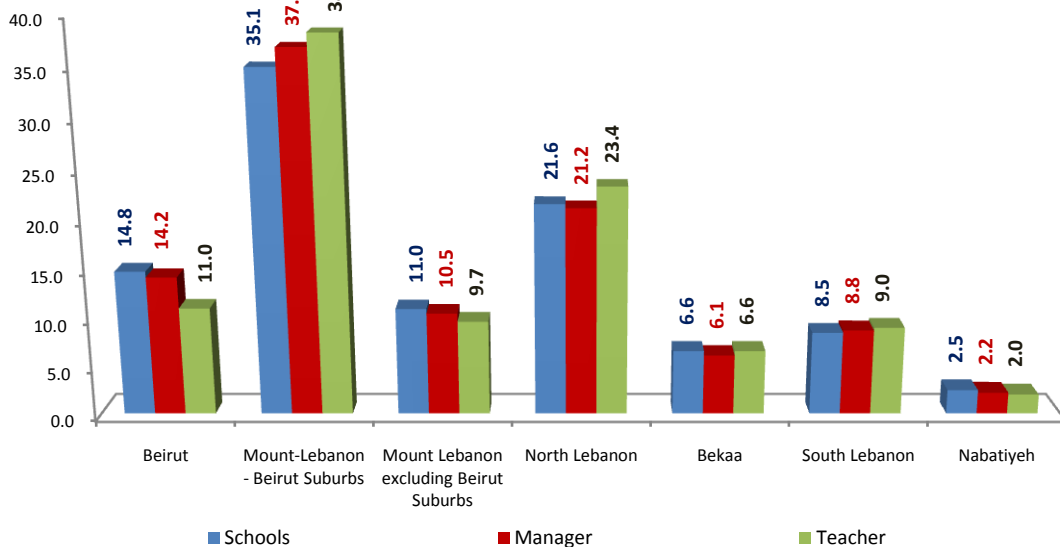
Graph 12.3 – Geographic distribution in percentage of vocational education public schools and staff in 2007/2008



Graph made by CAS based on the Centre de Recherche et de Développement Pédagogique data (2008)

There are 365 private vocation education schools in Lebanon recruiting 7,035 teachers and 457 managers. Among these 7,492 people, 48.7% are females.

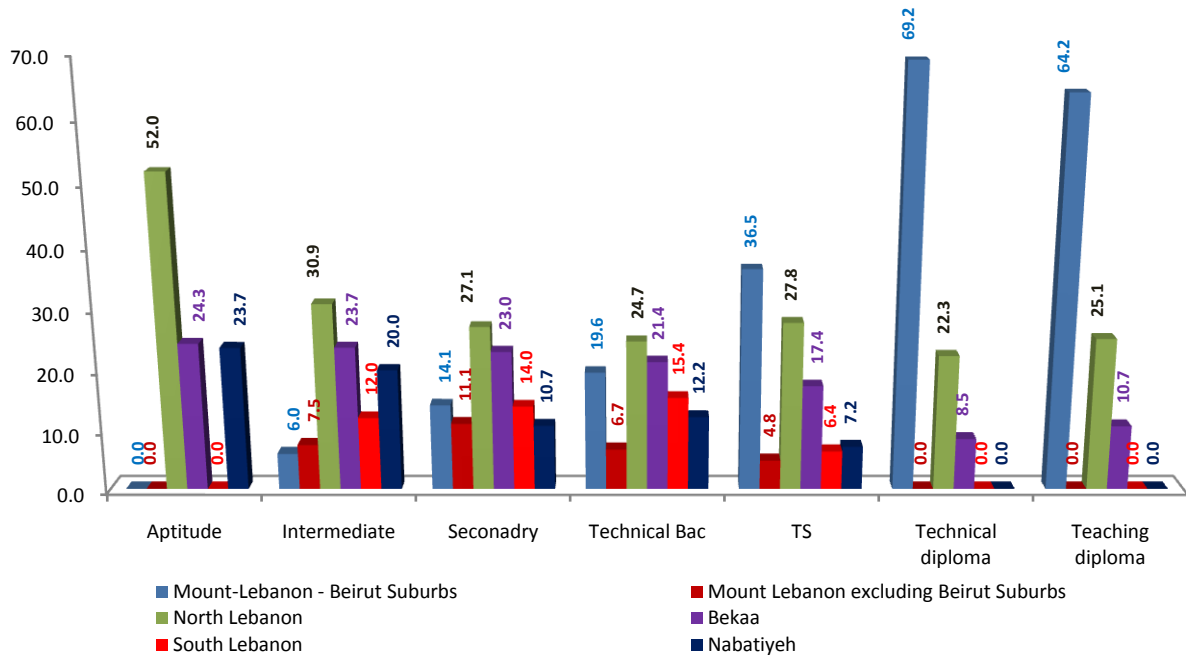
Graph 12.4 – Geographic distribution in percentage of vocational education private schools and staff in 2007/2008



Graph made by CAS based on the Centre de Recherche et de Développement Pédagogique data (2008)

As for official vocational diplomas, 40,253 official diplomas are delivered in 2007/2008.

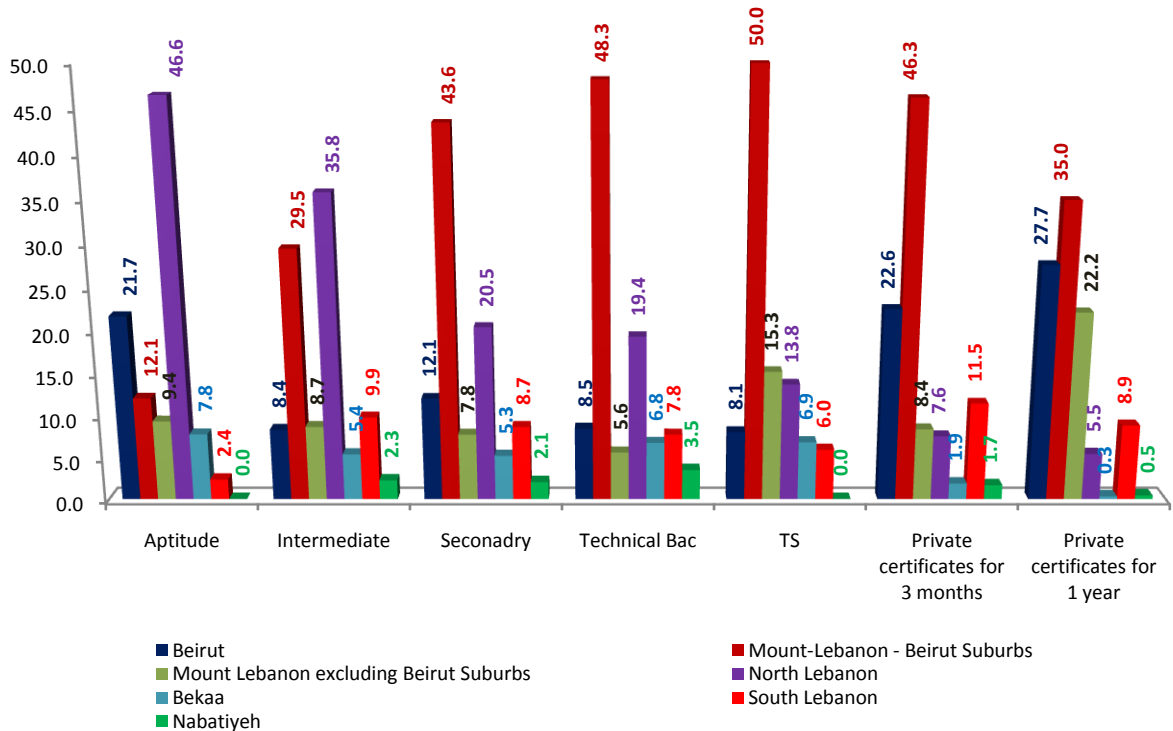
Graph 12.5 – Distribution in percentage of official vocational diplomas in 2007/2008



Graph made by CAS based on the Centre de Recherche et de Développement Pédagogique data (2008)

As for private vocational diplomas, 62,285 students recieved diplomas in 2007/2008.

Graph 12.6 – Distribution in percentage of students studying in private vocational schools and receiving vocational diplomas in 2007/2008

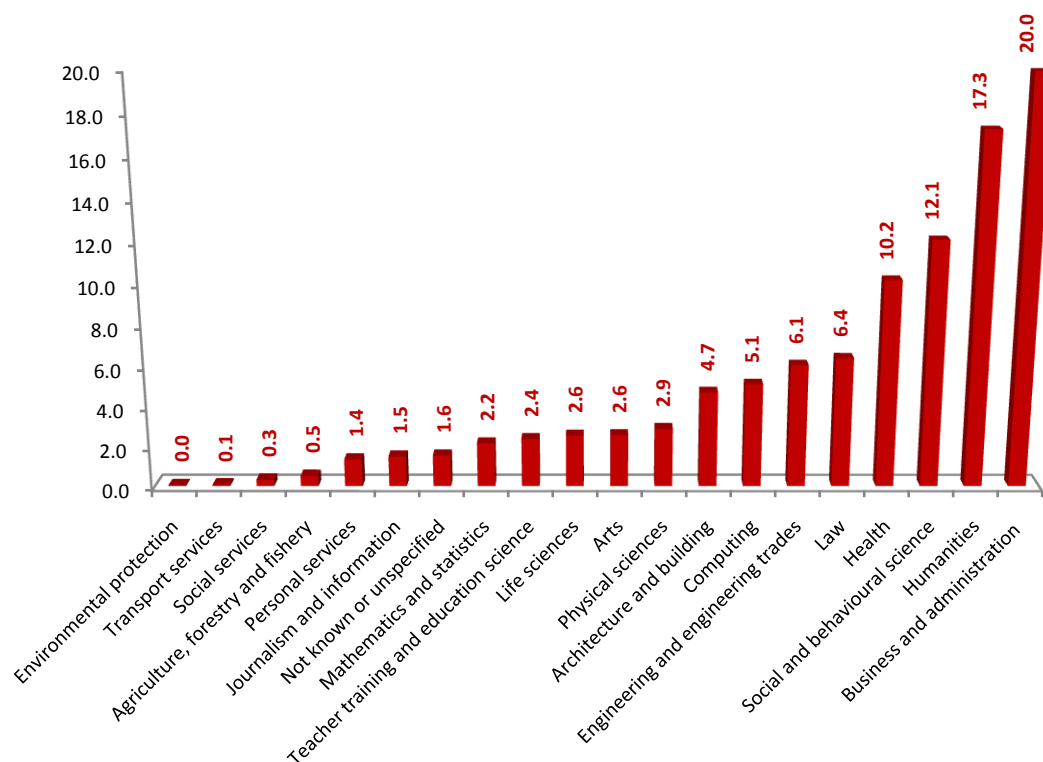


Graph made by CAS based on the Centre de Recherche et de Développement Pédagogique data (2008)

Higher education

There are 167,165 students enrolled in higher education in Lebanon in 2007/2008 of whom 54.9% are females and 85.7% are Lebanese. Among the 167,165 students, there are 44.4% enrolled in the Lebanese University. There are 5,064 managers working in higher education in Lebanon in 2007/2008 of whom 50.6% are females and 36.3% are working in the Lebanese University. There are also 14,608 professors teaching in higher education in 2007/2008 of whom 35.4% are females and 36.0% are teaching in the Lebanese University. The 167,165 students are enrolled in 20 majors according to the International Standard Classification of Education (USCED). 20.0% of students are enrolled in Business and administration major.

Graph 12.7 – Distribution of higher education students by ISCED in 2007/2008



Graph made by CAS based on the Centre de Recherche et de Développement Pédagogique data (2008)

Education in Lebanon

Finally, we sketch a general dashboard of education in Lebanon for the academic year 2007/2008.

Table 12.2 – General education dashboard in Lebanon in 2007/2008

Type of establishment	Establishments	Students	Professors / Teachers	Managers
Academic education				
Public schools	1,385	301,380	33,376	
Private free schools	374	126,391	6,605	
Private schools	1,046	479,440	41,827	
Vocational education				
Public vocational schools	97	40,253	10,394	435
Private vocational schools	354	62,285	7,035	457
Higher education				
Public universities	1	74,176	5,256	1,840
Private universities	37	92,989	9,352	3,224

Table made by CAS based on the Centre de Recherche et de Développement Pédagogique data (2008)